

OPERATING INSTRUCTIONS

Category II Pressure Accessory
Type C3 Reducing Valve



Notified Body No. 0038



Application

Suitable for compressed air, gas, water and oil service.



Operation

The outlet pressure can be varied as required by compressing or relaxing the spring using the adjusting screw:

Clockwise turns compress the spring increasing outlet pressure.

Anti-clockwise turns relax the spring decreasing outlet pressure.



Lifting and Handling

Wooden cases should be lifted using either a Fork Lift Vehicle or a Crane with adequate Safety Approved slings applied to carry the weight, which will be evenly distributed within the case.

Important: All manual handling operations should be carried out in compliance with the Manual Handling Operations Regulations 1992 (SI 1992/2793) (EC Directive 90/269/EEC).



Storage

If valve is bound to be stored longer than 6 months, turn back adjusting screw to remove compression from spring. (Re-adjust spring compression on installation).

Valves with Screwed ends shall have plugs fitted in their connections to prevent ingress of dirt etc. Flanged valves shall have their bores blanked off.

We recommend that plugs/blanks be removed immediately prior to installation.



Installation and Commissioning

It is most important that the pipeline be clean and free from dirt, scale, etc.

Fit valve in pipeline with flow as indicated by arrow cast on valve body and with adjusting screw directly above or below pipeline.

It is also advisable to fit a stop valve on high-pressure side of line.



Important! When fitting Pressure Gauge to valve body, ensure threads do not penetrate, interfering with internal moving parts, otherwise valve could jam.



Maintenance

Examine annually for signs of defect, damage or deterioration.

Give special attention to contact/seating faces, if damaged these should be re-faced. Discs, diaphragms, seals and springs should be replaced if there is any sign of deterioration.

All parts should move freely in their respective guides.

Note: Quote the unique valve serial number when ordering spare parts.



Safety Warning!

Before dismantling ensure that the valve has been isolated from the pressure and the adjusting screw has been removed.



Dismantling and Reassembly

To replace Diaphragm: When the pressure is off: Remove; Adjusting Screw (18); Bonnet (15); Spring Carrier (16) and Spring (14); Piston Nuts (11 & 12) and Piston (10). Diaphragm (9) should come away freely. Clean the diaphragm seating spigot on Body (3). Follow reassembly instructions below.

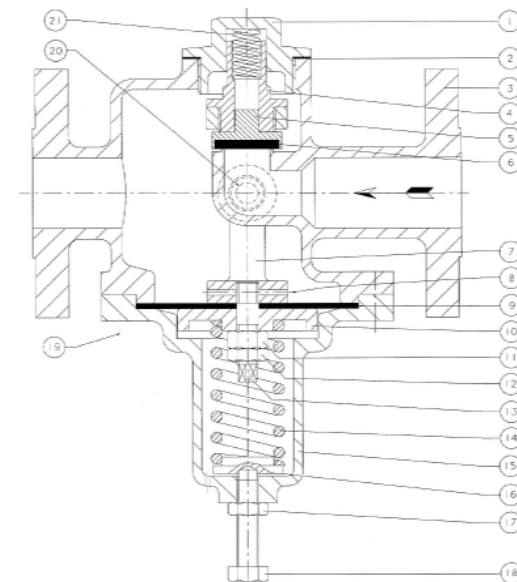
To replace Disc: Follow the instructions for replacement of Diaphragm; this will leave Saddle (7) unrestricted at Diaphragm end of valve. Remove Cap (1) by turning in an anticlockwise direction and remove Joint (2), this will give access to Saddle Cap (4) and Loading Spring (21 - *If fitted*). Remove Loading Spring then hold unrestricted Saddle (7) at Diaphragm end of valve, unscrew Saddle Cap in an anticlockwise direction. Remove Disc Holder (5); The Disc can then be prised out using a small screwdriver (care must be taken not to damage Disc Holder).

The new Disc can be pushed into the Disc Holder; we recommend using LOCTITE® 415 to bond it in place. Follow reassembly instructions below.

Note: Replace all joints with new ones.

Reassembly: The valve is reassembled in reverse order of above dismantling procedures, in addition Disc must be held in fully closed position while new Diaphragm is fitted, ensuring that faces of collar on Saddle and diaphragm spigot on Body are level (as shown in the illustration). Before fitting Bonnet (15) make sure Saddle (7) is square in Body (3) and does not touch side of nozzle. Readjust the pressure as necessary by means of the Adjusting Screw (18); Locknut (17) should then be tightened.

LOCTITE® is a Registered Trade Mark of Loctite Corp. USA



Item	Description	Qty
1	Cap	1
✖ 2	Joint (Cap)	1
3	Body	1
4	Saddle Cap	1
5	Disc Holder	1
✖ 6	Disc	1
7	Saddle	1
8	Pin	1
✖ 9	Diaphragm	1
10	Piston	1
11	Nut	1
12	Locknut	1
13	Piston Bolt	1
14	Spring	1
15	Bonnet	1
16	Spring Carrier	1
17	Locknut, Adjusting Screw	1
18	Adjusting Screw	1
19	Setscrews	8
20	Plug	1
21	Loading Spring*	1

* If Required

✖ Recommended spare parts

EC DECLARATION OF CONFORMITY

Issued in accordance with the

PRESSURE EQUIPMENT DIRECTIVE (PED) 97/23/EC

We hereby declare that, in compliance with the above Directive, the product(s) detailed below, have been manufactured in accordance with conformity assessment module **D1** 'Full quality assurance (ISO 9001)' as approved by Lloyds Register (Notified Body No. 0038), of Middlemarch Office Village, Siskin Drive, Coventry, CV3 4FJ, UK, under EC Certificate of Conformity RPS 0160389/02.

Product Description – Pressure Accessory

Product Reference – Type C3 Reducing Valve

Comprising – Not Applicable

Serial Number – Not Applicable

Applicable Standards – None

Other Applicable Directives – None

Signed: A. Derrick
Name: A. J. Derrick
Position: Managing Director
Date: 24th April 2002

