

# OPERATING INSTRUCTIONS

Category II Pressure Accessory  
Type 8 Surplus Valve



## Application

Suitable for compressed air, gas, water and oil service.



## Operation

The set pressure can be varied as required by compressing or relaxing the spring using the adjusting screw:

Clockwise turns compress the spring increasing set pressure.

Anti-clockwise turns relax the spring decreasing set pressure.



## Lifting and Handling

Wooden cases should be lifted using either a Fork Lift Vehicle or a Crane with adequate Safety Approved slings applied to carry the weight, which will be evenly distributed within the case.

**Important:** All manual handling operations should be carried out in compliance with the Manual Handling Operations Regulations 1992 (SI 1992/2793) (EC Directive 90/269/EEC).



## Storage

If valve is bound to be stored longer than 6 months, turn back adjusting screw to remove compression from spring. (Re-adjust spring compression on installation).

Valves with Screwed ends shall have plugs fitted in their connections to prevent ingress of dirt etc. Flanged valves shall have their bores blanked off.

We recommend that plugs/blanks be removed immediately prior to installation.



## Installation and Commissioning

It is most important that the pipeline be clean and free from dirt, scale, etc.

Fit valve in pipeline with flow as indicated by arrow cast on valve body and with adjusting screw directly above pipeline.

It is advisable to fit a stop valve on high-pressure side of line.



## Maintenance

Examine annually for signs of defect, damage or deterioration.

Give special attention to contact/seating faces, if damaged these should be re-faced. Diaphragms and springs should be replaced if there is any sign of deterioration.

All parts should move freely in their respective guides.

**Note:** Quote the unique valve serial number when ordering spare parts.



## Safety Warning!

Before dismantling ensure that the valve has been isolated from the pressure and the adjusting screw has been removed.



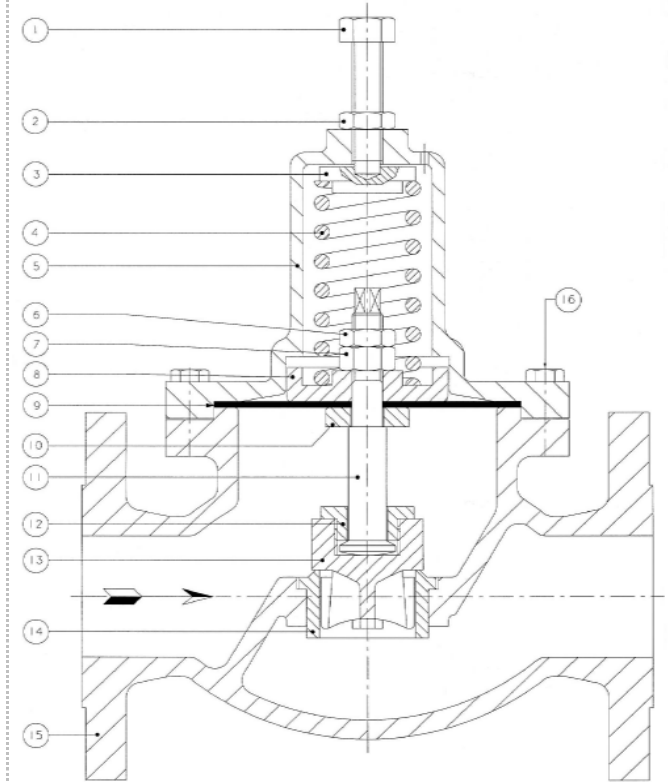
## Dismantling and Reassembly

**To remove Diaphragm:** When the pressure is off: Remove; Adjusting Screw (1) and Locknut (2); Setscrews (16) and Bonnet (5); Spring Carrier (3); Spring (4); Nuts (6 & 7) and Piston (8). Diaphragm (9) should come away freely. Clean diaphragm seating spigot on Body (15) before reassembly.

**To remove Valve Lid:** Follow the instructions for removal of the diaphragm. Remove Distance Piece (10) then unscrew and remove Valve Lid Cap (12); Valve Lid (13) may then be removed for examination and re-machining, if necessary.

**Note:** Replace Diaphragm (9) with a new one.

**Reassembly:** The valve is reassembled in reverse order of above dismantling procedures. Readjust the pressure as necessary by means of Adjusting Screw (1), Locknut (2) should then be tightened.



Item	Description	Qty
1	Adjusting Screw	1
2	Locknut (Adjusting Screw)	1
3	Spring Carrier	1
4	Spring	1
5	Bonnet	1
6	Locknut	1
7	Nut	1
8	Piston	1
✳ 9	Diaphragm	1
10	Distance Piece	1
11	Spindle	1
12	Valve Lid Cap	1
13	Valve Lid	1
14	Seat	1
15	Body	1
16	Setscrew	Various

✳ Recommended spare parts

## **EC DECLARATION OF CONFORMITY**

Issued in accordance with the

### **PRESSURE EQUIPMENT DIRECTIVE (PED) 97/23/EC**

We hereby declare that, in compliance with the above Directive, the product(s) detailed below, have been manufactured in accordance with conformity assessment module D1 'Full quality assurance (ISO 9001)' as approved by Lloyds Register (Notified Body No. 0038), of Middlemarch Office Village, Siskin Drive, Coventry, CV3 4FJ, UK, under EC Certificate of Conformity RPS 0160389/02.

**Product Description** – Pressure Accessory

**Product Reference** – Type 8 Surplus Valve

**Comprising** – Not Applicable

**Serial Number** – Not Applicable

**Applicable Standards** – None

**Other Applicable Directives** – None

Signed: A. Derrick  
Name: A. J. Derrick  
Position: Managing Director  
Date: 24<sup>th</sup> April 2002

